

# Scanner Setup

Use the instructions on this Quick Reference Card in conjunction with those found in the scanner's *Operator Manual* or *Quick Guide* to set up your Panini scanner for use with the Remote Deposit utility.

## System Requirements

### Operating Systems:

- Windows 2000, Service Pack 4\*
- Windows XP, Service Pack 1 or 2
- Windows Vista Home (Premium, Business, and Enterprise)

### Hardware:

- **Processor:** 1 Ghz Pentium IV
- **RAM:** 512 Mb
- **Available Hard Drive Space:** 200 Mb
- **Communications Port:** USB 2.0
- **Communications:** DSL/Cable connection or better

## Overview

To install the scanner:

1. Unpack the scanner, comparing the included components to the packing list.
2. Attach the Feeder Extension to the scanner.\*
3. Install the ink cartridge or franking roller into the scanner.
4. Connect the scanner's power cables and plug it in. You may attach the included USB cable to the scanner's USB port at this time, but *do not* attach the USB cable to the computer.
5. Install the scanner software. See the *Panini Scanner Driver Download Instructions* reference for instructions on obtaining scanner software if no driver CD was included in the scanner package.
6. Connect the scanner to your computer's USB port.
7. Set the system Web address as a trusted site.
8. Log on and set scanner preferences.

Once the scanner has been set up, it will be automatically turned on and off by the signal sent from the Remote Deposit application.

## Unpacking the Scanner

Once you unpack the scanner, check the contents against the packing list. Included should be:

- Scanner
- Driver and scanner software (1 CD)  
(may be provided through alternate means)
- *Operator Manual* or *Quick Guide*
- Accessories box, containing:
  - Feeder extension\*
  - Inkjet cartridge\*
  - USB 2.0 cable
  - Power cable and power supply
  - Feeder ring, front separator ring, and rear separator ring (replacement parts)\*
  - Adapter for the HP 51604 print cartridge\*

## Attaching the Feeder Extension\*

The feeder extension allows you to load multiple checks for scanning; It should be attached before the scanner is used. See the *Operator Manual* for illustrated instructions.

## Installing the Ink Cartridge or Franking Roller

See the *Operator Manual* or *Quick Guide* for illustrated instructions on installing the ink cartridge or franking roller. The franking roller is used with the Panini I:Deal scanners, while the ink cartridge is used with other Panini scanners.

## Plugging the Scanner In

The scanner should be plugged in before you connect it to your computer. Make sure that the scanner is located:

- Out of direct light. (Direct light may interfere with the scanner's ability to read check data.)
- As far from the monitor as possible, if you are using a CRT monitor. (The monitor's electromagnetic emissions may impede the scanner's ability to scan checks' magnetic characters.)
- On a level surface. (An uneven surface may impede the scanner's ability to scan checks' magnetic characters.)

## Installing the Scanner

Run the following setup utility **before** connecting the scanner to your computer:

1. Make sure the scanner's USB cable is not connected to the computer. (The installation program will prompt you to check.)
2. Insert the CD into your computer's CD drive.
3. Run (**Start** menu > **Run** > browse the CD and double-click) the **setup.exe** program.

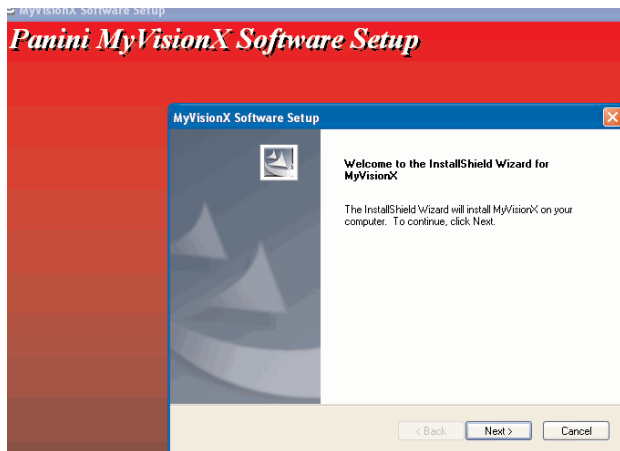
Depending on your configuration, this program may run automatically when you insert the CD. If the software was downloaded, browse to the directory in which you saved the file.

\* Does not apply to Panini I:Deal scanners

# Scanner Setup (Cont'd)

## Installing the Scanner (Continued)

### MyVisionX starting screen



### I:Deal starting screen



4. Follow the on-screen prompts to install the scanner software
5. When setup is complete, click the **Finish** button to finish the installation.

## Connecting the Scanner to Your Computer

Plug one end of the USB cable into the scanner and the other into an open USB 2.0 port on your computer.

## Setting the System Web Address as a Trusted Site

Windows Vista users must set the system Web address as a Trusted Site in Internet Explorer. Windows XP users may also wish to set the system Web address as a Trusted Site if they are experiencing problems displaying all system features.

To set the system Web address as a Trusted Site:

1. Log off from the system.
2. From the Internet Explorer **Tools** menu or button, select **Internet Options**. A pop-up window is displayed.
3. Click the **Security** tab.
4. Click the **Trusted Sites** icon.
5. Click the **Sites** button.
6. Enter the site address, then click the **Add** button
7. Click **OK**. The window is refreshed.
8. Close the browser window and re-open it.

## Setting Scanner Preferences

Once the scanner has been installed, you must set your scanner preferences to use it when scanning checks.

To set scanner preferences:

1. Log on to the system.
2. From the **Administration** menu, select **Preferences**. The **Administration** screen is displayed.
3. Select the **Remote Deposit** tab.
4. From the **Scanner Type** drop-down list, select your scanner:

### Panini I:Deal Scanners

- To print a message ("Electronically Deposited") on the back of each check when the check is scanned  
Select **Panini I:Deal with Franking**.
- To scan checks with no printed message  
Select **Panini I:Deal**.

### All other Panini Scanners

- If you are using the Microsoft Vista operating system, with a scanner manufactured by Panini, select the **Panini VisionX** scanner regardless of the actual model of scanner you own.
- Regardless of your operating system, if you have manually installed a new Panini scanner driver (version 3.0 or later) on your computer, select the **Panini VisionX** scanner.
- Regardless of your operating system, if you have manually installed a new Panini scanner driver (version 3.0 or later) and the **Panini VisionX With MICR** selection is available, select it in favor of the Panini VisionX scanner. This feature offers additional MICR-scanning accuracy.
- On Windows XP, if you are currently using, or have re-installed, an existing Panini scanner driver (before version 3.0), select the **Panini MyVision** scanner.

To view the driver version for your Panini scanner, access the demo installed with the driver and click the Info button. The driver version is displayed in the API Release field.

4. Select the **Show check references** checkbox to enable display of the Check Reference column, or deselect the checkbox to hide the column.
5. Click the **Submit** button to save your changes.